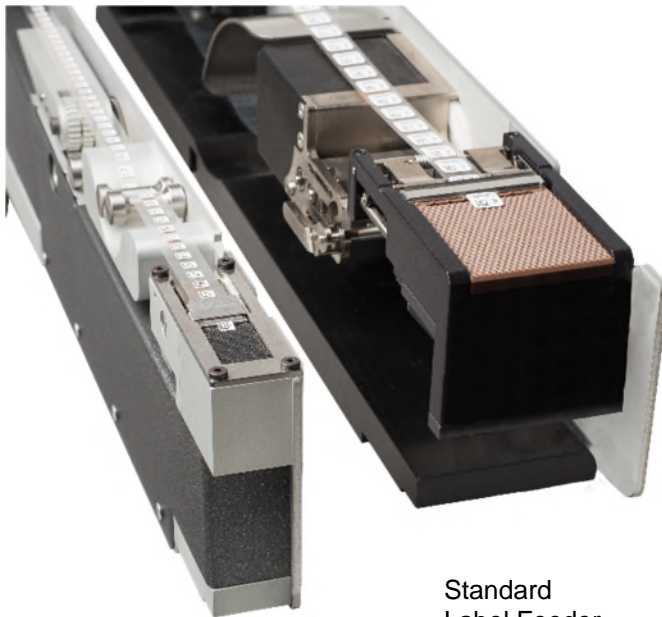




www.linkhamson.com
sales@linkhamson.com
01494 439786

LFS - Slimline Label Feeder only 30 mm wide

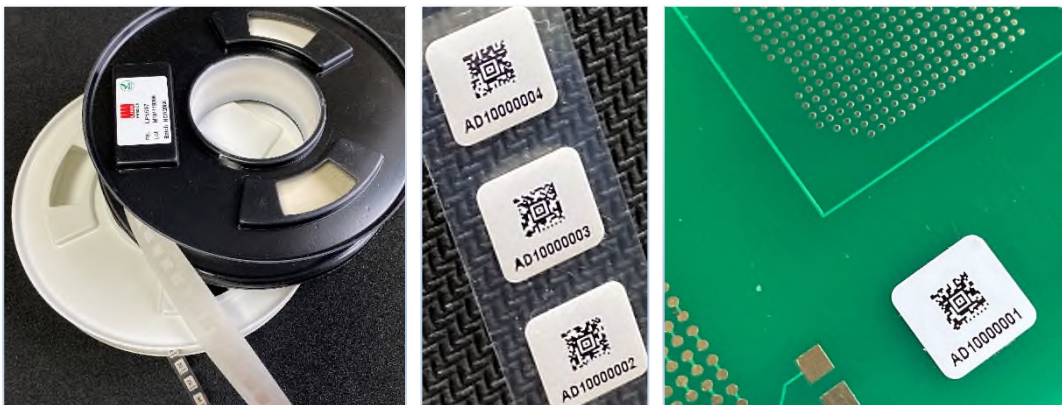
Save Valuable Feeder Space



Slimline
Label Feeder
30 mm wide

Standard
Label Feeder
ca. 60 mm wide

LINK Labels, your source for Auto-Apply Labels



LFS Slimline Label Feeder

The space-saving labelling solution:
only 30 mm wide

Automated labelling using a label feeder is a cost-efficient and simple solution for adding PCB labels to your boards.

With a width of around 60 mm conventional label feeders are using several feeder positions in the pick and place system – although the labels are in most cases very small – very often much less than 10 x 10 mm.

The Slim Line Label Feeder from EFS is the perfect solution for small labels – with the revolutionary width of 30 mm it needs **one feeder position only** in the pick and place system.

Saving space reduces the implementation costs, simply because feeder space is so a valuable commodity in your production line.

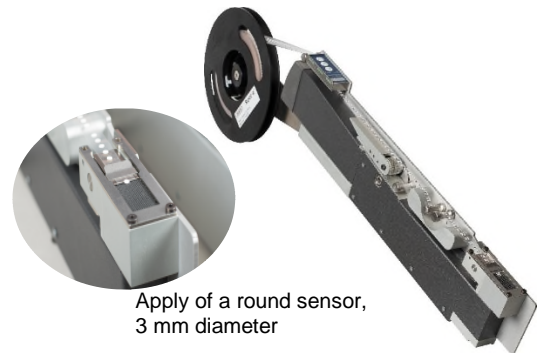
Further advantages:

- Compatible with many popular pick and place systems and special machines
- Feeds the label very simple like a component
- The flexible solution for marking your boards
- Precise and automatic placement of labels
- Reliable electronic operation
- Low maintenance costs
- Saves time and money
- Not only label but also odd components can be fed with the label feeder

The Slim Line Label Feeder can be used for all label sizes from 3x3 mm (Mycronic from 4x4 mm), maximum label length is 25 mm, maximum liner width 15 mm.

The empty liner material is collected in an integrated box and can be easily disposed during the placement without production stop.

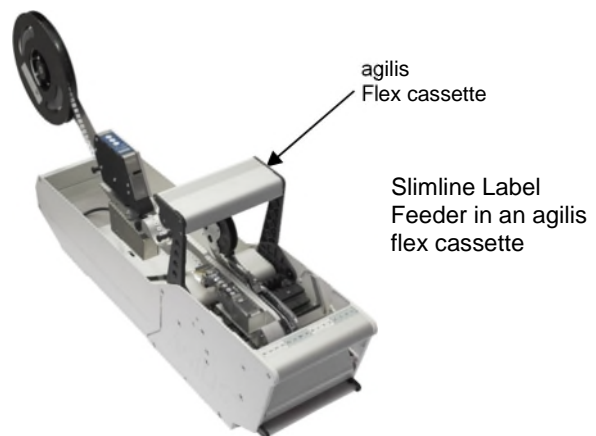
Optionally the feeder can be equipped with a reel holder for the label reel.



Compatible with most pick and place systems

Our Slimline Label Feeder can be used in the following pick and place systems:

Assembleon, ASM, Essemtec, Fuji, Juki, Panasonic, Samsung, Universal, Yamaha and **now new: Mycronic**



For applications with bigger labels our Medium Line Label Feeder (LFM) can be used.

The maximum liner width usable with the LFM is 30 mm – and this at a complete feeder width of only 46 mm

