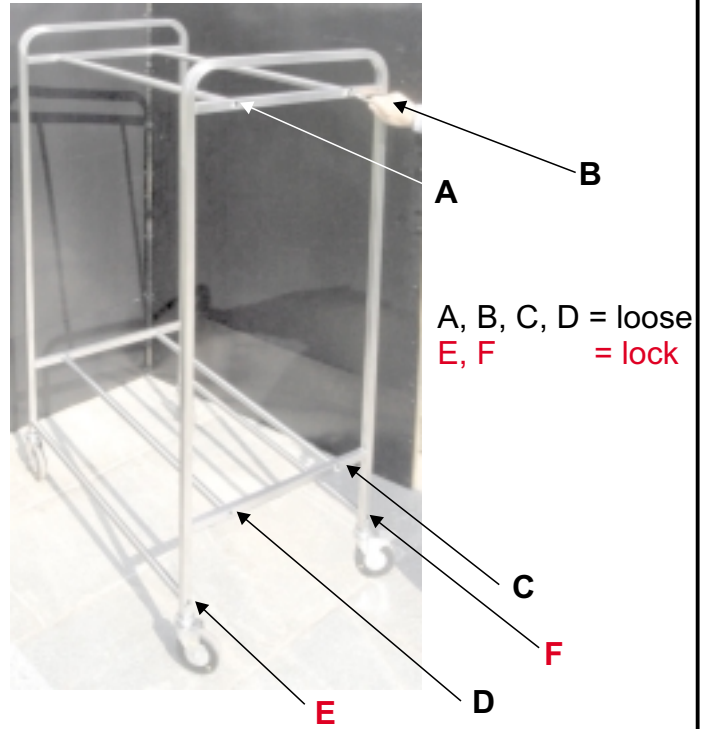


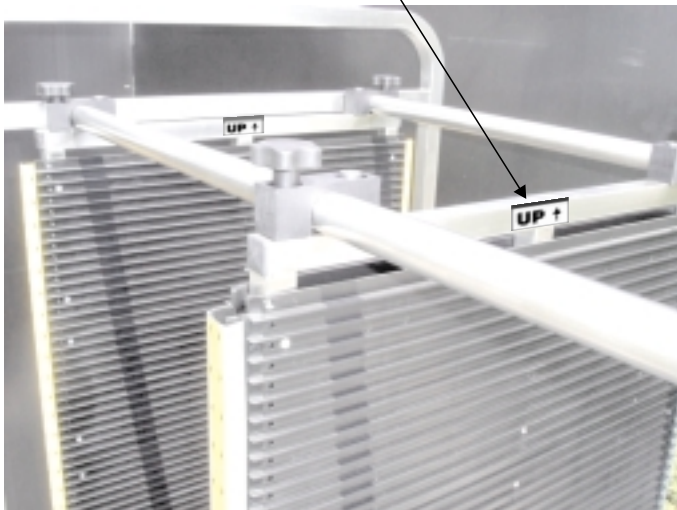
LABECART

ASSEMBLY INSTRUCTIONS

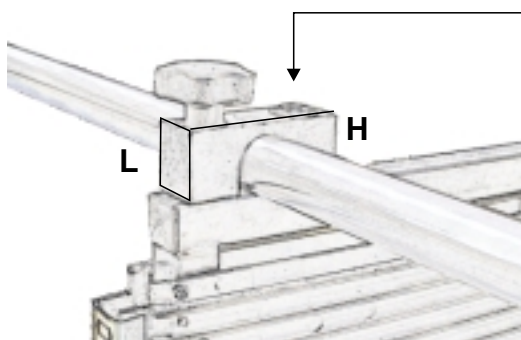
- 1 - Fix the 6 round bar with a 10mm Allen screw driver so to connect the lateral support posts together. Screw tight the 2 bottom bars and loosen the 4 upper ones.



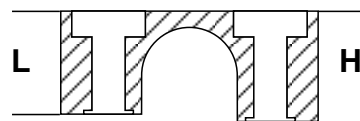
ATTENTION:
follow the UP marks



- 2 - Assemble the lateral and intermediate panels as in the picture, fixing the clamp properly, tighten the internal side screws and loosen the upper knob.



Tighten the internal side screws



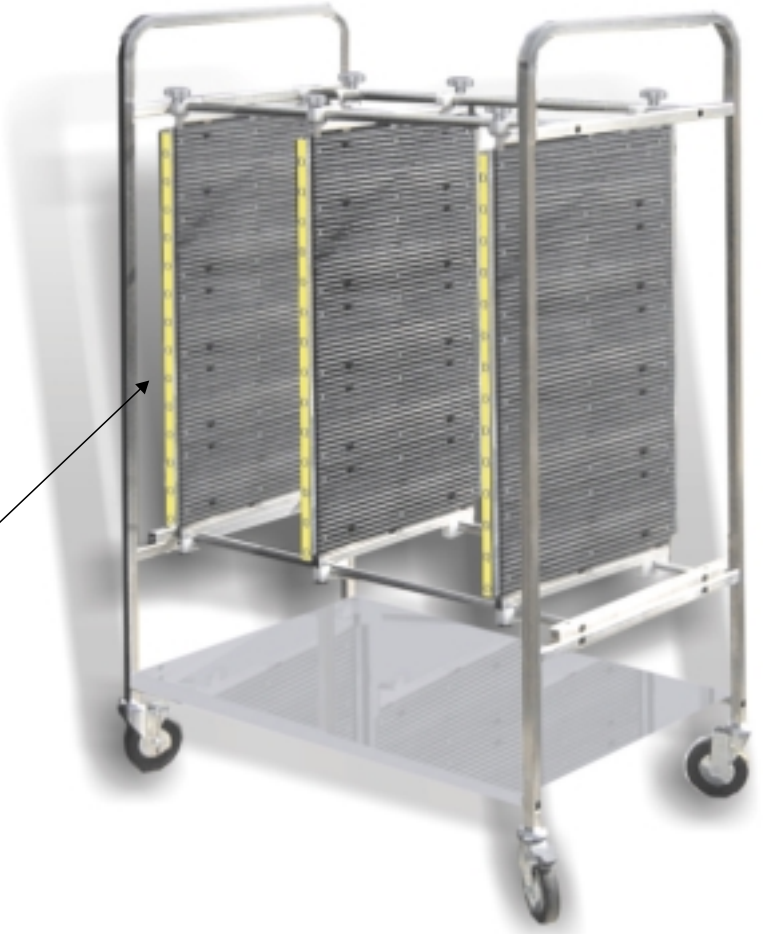
LABECART

ASSEMBLY INSTRUCTIONS

- 3 - Slide and place one lateral panel against the support post, then tighten the 4 knobs.

Take the first intermediate panel at the right distance, make use of 2 PCBs or trays to adjust it properly, then tighten the 4 knobs.

Use the same system to adjust and fix the other panels.



Lateral panel against the support post



- 4 - Strongly tighten the lateral screws on the posts.

A, B, C, D = lock